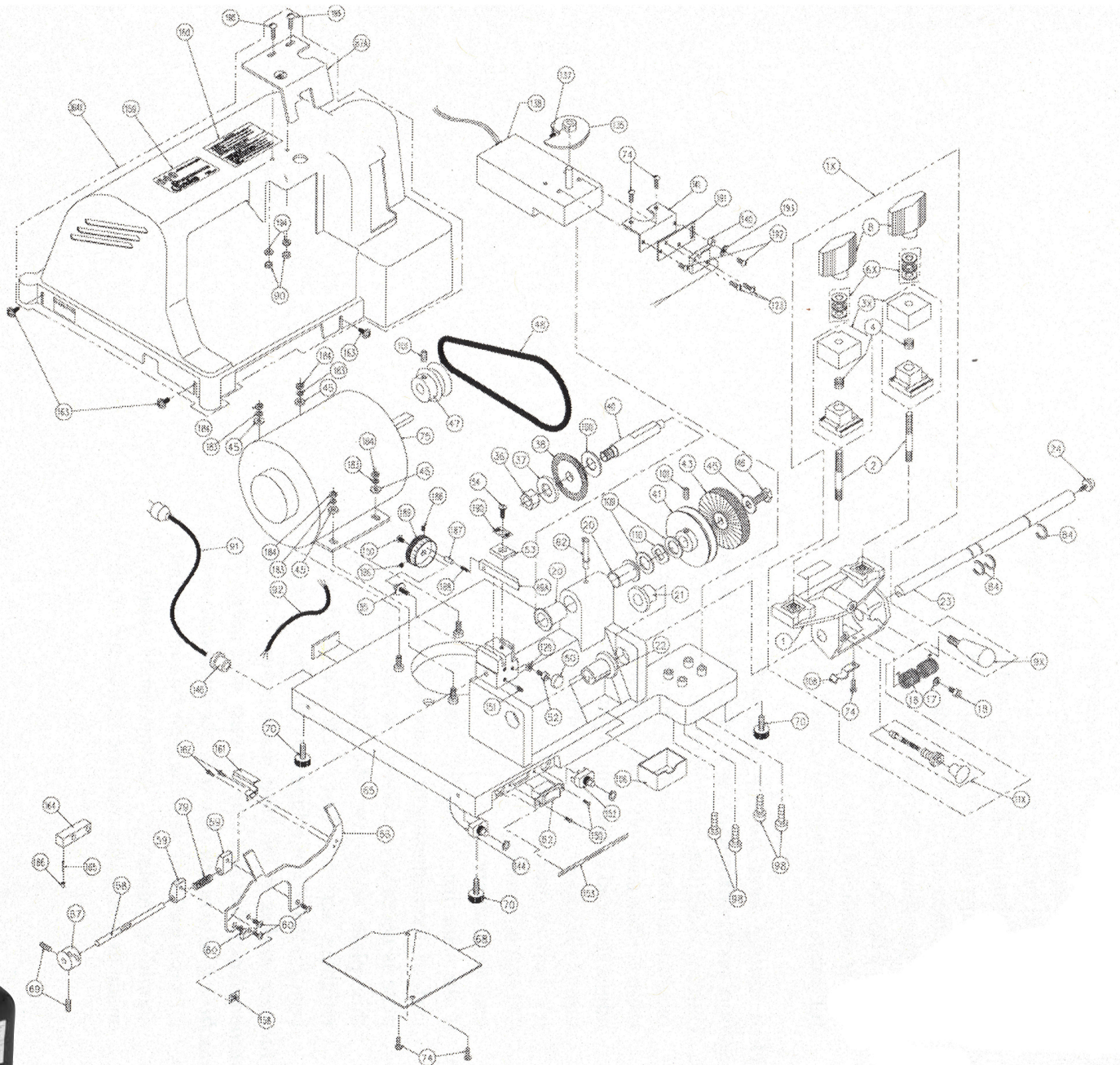


040



# 040

	Description	Part Number	Item Number		Description	Part Number	Item Number
1	Carriage	040-1	103263M	75	Motor, 1/4 HP, 115V, C/S	040-75	131505
1X	Carriage Assembly	040-1X	BD0662XXXX	79	Key Gauge Spring	040-79	131810
2	Carriage Stud	025-2	BD0328XXXX	82	Oil Cup	025-82	BD0362XXXX
3X	Vise Jaw assembly	025-3X	BD0410XXXX	84	Crescent Ring	024B-84	1102033P
4	Vise Jaw Spring	025-4	1103495P	86AX	Safety Hood Assembly	040-86AX	501408
6X	Thrust Bearing Set	025-6X	BD0222XXXX	87A	Safety Shield	040-87A	129133
8	Wing Nut	025-8	BD0329XXXX	90	Nut, 10-32	025-90	151300
9X	Carriage Handle	040-9X	131516M	91	Power Cord	040-91	1103290P
11X	Trigger Assembly	040-11X	BD0387XXXX	92	Motor Cable	040-92	1103118P
16	Carriage Torsion Spring	040-16	1105170P	98	Cam Motor Screws	040-98	174114
17	Washer	025-17	194251	100	Cutter Spacer, Right	040-100	194009
18	Screw, 10-32 X 1/2"	025-18	174605	101	Set Screw, 1/4-20 X 1/4"	025-101	174619
20	Cutter Shaft Bushing	025-20	BD0360XXXX	106	Chip Tray	040-106	132021
21	Carriage Shaft Bushing, Right	025-21	BD0361XXXX	108	Carriage Bumper	040-108	131799
22	Carriage Shaft Bushing, Left	040-22	131803	109	Bearing Washer	025-109	129031
23	Carriage Shaft	040-23	131606	110	Wave Washer	025-110	194021
24	Friction Reducer	040-24	131926	123	Screw, 4-40 X 1/4"	040-123	172018
36	Cutter Nut	025-36	151090	129	Locking Nut (8-32)	040-129	151009
37	Cutter Spacer	025-37	1106180P	135	Cam	040-135	129106M
38	CU20 Cutter	CU20	BC0151XXXX	137	Set Screw, 10-32 X 3/16"	040-137	174449
40A	Cutter Shaft	025-40A	BD0423XXXX	138	Gear Motor (115 Volt)	040-138	131506
41	Cutter Shaft Pulley (3-1/2")	025-41	BD0364XXXX	140	Gear Motor Cam Switch	040-140	129877
43	Nylon Brush (814-00-51)	025-43	BD0221XXXX	141A	Micro Switch Plate (Static)	040-141A	129076
45	Brush Bolt Washer, 5/16"	025-45	194080	144	Automatic Cycle Switch	040-144	BD0354XXXX
46A	Hex Head Screw, 5/16"-18 X 3/4"	025-46A	174279	146	Strain Relief For Power Cord	040-146	129023
47	Motor Pulley 2"-3L	025-47	129085	150	Switch Screws (6-32 X 1/4")	040-150	1103395P
48	V-Belt, 3L-180	025-48	BD0468XXXX	151	Set Screw 8-32 X 3/8"	040-151	174619
49	Cutter Guide (Stylus)	040-49	BD0544XXXX	152	Deburring Switch	040-152	131808
50	Carriage Stop	040-50	131123	153	Switch Panel Label	040-153	131811
52	Socket Head Screw, 8-32 X 1/2"	040-52	174081	158	Key Gauge Label	040-158	131805
53A	Cutter Guide Binding Plate	045-53A	129463	160	Caution Label	040-160	131809
54	Cutter Guide Binding Screw	045-54	174153	161	Key Gauge Guard	040-161	131778
55A	Adjusting Screw	045-55A	129461	162	Key Gauge Guard Screws	040-162	174034
56	Key Gauge	040-56	131797	163	Hood Screw	045-163	1103379P
58	Key Gauge Dowel Pin	040-58	131806	164	Cam Follower Block	040-164	131802
59	Key Gauge Housing (2)	025-59	1106113A	165	3/32" X 1/2 Dowel Pin	040-165	131800
60	Cap Screw, 8-32 X 1/2"	025-60	1106155P	166	Cam Follower Pin	040-166	131804
62	On & Off Switch	040-62	131807	169	Carriage Label	040-169	131841
67	Key Gauge Cam	040-67	131801	171	Cutter Pulley Set Screw	025-171	174144
68	Electrical Cover	040-68	131603	183	1/4-20 Lock Washer	040-183	194253
69	Set Screw 10-24 X 3/8"	040-69	131812	184	1/4-20 Hex Nut	040-184	151077
70	Rubber Mount	040-70	129849	186	6-32 X 3/8 Set Screw	045-186	129745
74	Truss Head Screw	040-74	1103379P	187	Dowel	045-187	153009

# 040

	Description	Part Number	Item Number		Description	Part Number	Item Number
188	Dowel Spring	045-188	199179	N/S	Instruction Manual	040P-IM	125007
189	Adjustment Dial	045-189	129467	N/S	Hex Key 3/32		129014
190	Cutter Guide Label	045-190	186066	N/S	Hex Key 5/32		129074
191	Switch Plate (Adjustable)	040-191	129077	N/S	Hex Key 1/8		129109
192	Switch Plate Screws	040-192	1103379P		Push Button Switch Boot		129844
193	Switch Plate Washers	040-193	194100	N/S	040 Sargent Guide		BD0600XXXX
194	#10 Flat Washer	045-194	194272	N/S	Circuit Breaker	025-61	1103128P
195	10-32 X 1/2 Button Head Screw	045-195	174152				