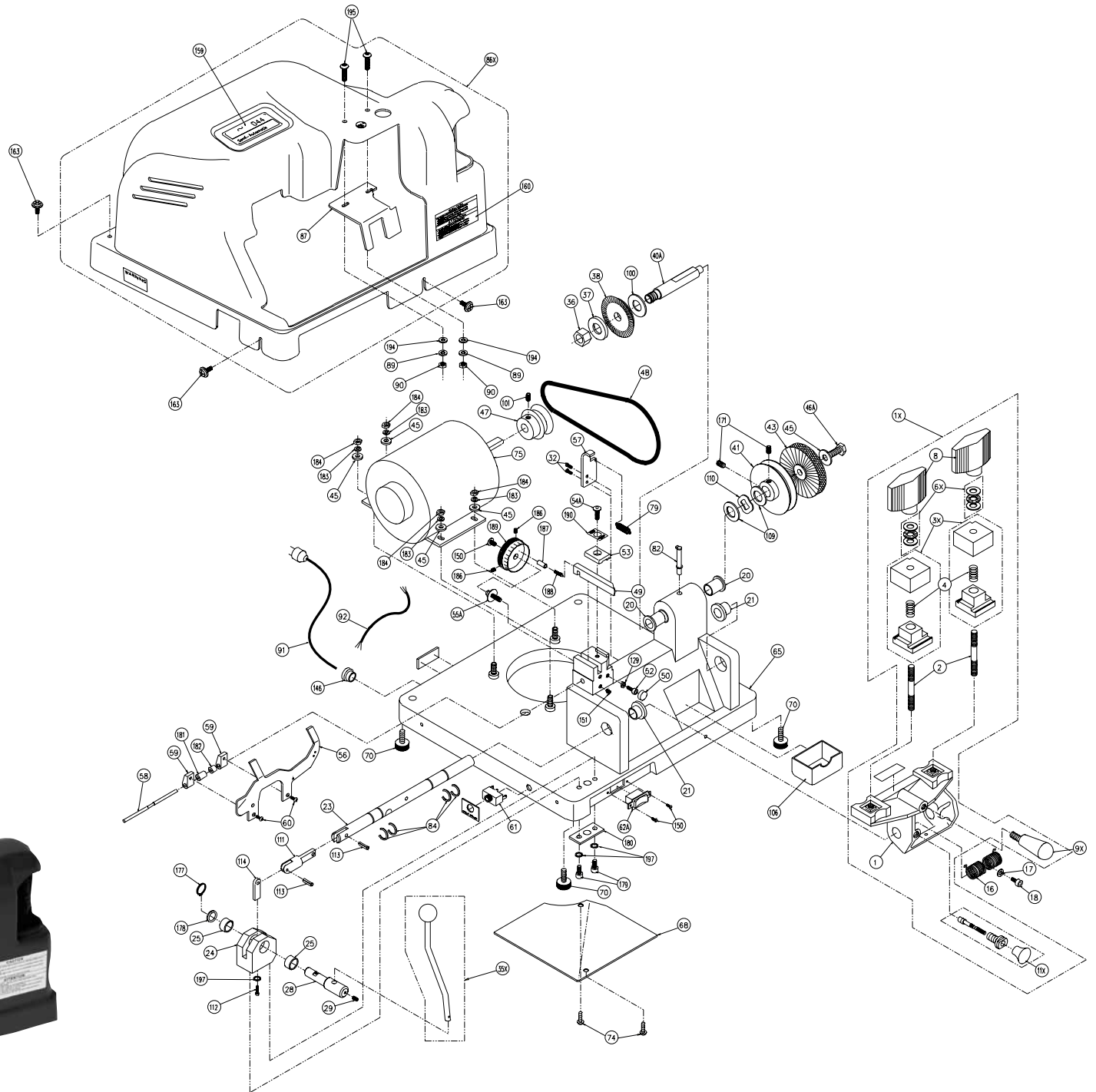


044



	Description	Part Number	Item Number	Dist.		Description	Part Number	Item Number
1	Carriage	024B-1	103263M		62A	On & Off Switch	025-62A	BD0359XXXX
1X	Carriage Assembly	024B-1X	600186		65	Machined Base	044-65	600292
2	Carriage Stud	025-2	BD0328XXXX		68	Electrical Cord	040-68	131603
3X	Vise Jaw Assembly	025-3X	BD0410XXXX		70	Rubber Mount	040-70	129849
4	Vise Jaw Spring	025-4	1103495P		74	Truss Head Screw, 8-32	040-74	1103379P
6X	Thrust Bearing Set	025-6X	BD0222XXXX		75	Motor, 1/4 HP, 115V, C/S	040-75	131505
8	Wing Nut	025-8	BD0329XXXX		79	Key Gauge Spring	024B-79	129054
9X	Carriage Handle Assembly	040-9X	131516M		82	Oil Cup	025-82	BD0362XXXX
11X	Trigger Assembly	040-11X	BD0387XXXX		84	Crescent Ring	024B-84	1102033P
16	Carriage Torsion Spring	040-16	1105170P		86X	Safety Hood Assembly	044-86X	501410
17	Washer	024-17	194251		87	Safety Shield	045-87	129681
18	Screw 10-32 X 1/2	024-18	174605		89	#10 Lockwasher	045-89	194006
20	Cutter Shaft Bushing	025-20	BD0360XXXX		90	Nut	025-90	151300
21	Carriage Shaft Bushing	025-21	BD0361XXXX		91	Power Cord	024B-91	1103290P
23	Carriage Shaft	024B-23	129126		92	3 Wire Motor Cable	024B-92	1103118P
23	Pivot Block	024B-24	129152		100	Cutter Spacer, Right	024B-100	194009
25	Pinion Shaft Bushing	024B-25	1105030P		101	Set Screw, 1/4-20 X 1/4	025-101	174619
28	Pinion Shaft	024B-28	129153		106	Chip Tray	040-106	132021
29	Set Screw, 1/4-20 X 5/16	024B-29	174079		109	Bearing Washer	025-109	129031
32	Socket Head Screw, 10-24 X 3/8	024B-32	129334		110	Wave Washer	025-110	194021
35X	Carriage Lever Assembly	044-35X	600291		111	Yoke	024B-111	129156
36	Cutter Nut	025-36	151090		112	Socket Head Screw, 10-32 X 3/4	024B-112	174685
37	Cutter Spacer	025-37	1106180P		113	Roll Pin	024B-113	129980
38	Cutter	CU20	BC0151XXXX		114	Torque Arm	024B-114	129155
40A	Cutter Shaft	025-40A	BD0423XXXX		129	Locking Nut (8-32)	040-129	151009
41	Cutter Shaft Pulley	025-41	BD0364XXXX		146	Power Cord Strain Relief	040-146	129023
43	Nylon Brush	814-00-51	BD0221XXXX		150	Switch Screws, 6-32 X 1/4	040-150	1103395P
45	Brush Bolt Washer, 5/16	025-45	194080		151	Set Screw 8-32 X 3/8	040-151	174619
46A	Hex Head Screw, 5/16-18 X 3/4	025-46A	174279		160	Caution Label	025-160	255288
47	Motor Pulley 2-3L	025-47	129085		163	Hood Screw	045-163	174151
48	V-Belt, 3L-180	025-48	BD0468XXXX		171	Cutter Pulley Set Screw, 5/16-18	025-171	174144
49	Cutter Guide (Stylus)	044-49	129462		177	Ext. Retaining Ring	024B-177	1500410P
50	Carriage Block	040-50	131123		178	Washer	024B-178	1500625P
52	Socket Head Screw, 8-32 X 1-1/2	040-52	174114		179	10-32 X 3/4 SCHS	024B-179	174685
53A	Cutter Guide Binding Plate	045-53A	129463		180	Mount Plate	024B-180	129154
54	Cutter Guide Binding Screw	045-54	174153		181	Key Gauge Spacer-Left	024B-181	129148
55A	Adjusting Screw	045-55A	129461		182	Key Gauge Spacer- Right	024B-182	129149
56	Key Gauge	040-56	131797		183	1/4-20 Lockwasher	040-183	194253
57	Key Gauge Bracket	024B-57	129157		184	1/4-20 Hex Nut	040-184	151077
58	Key Gauge Dowel Pin	024B-58	129136		186	6-32 X 3/8 Set Screw	045-186	129745
59	Key Gauge Housing (2)	025-59	1106113A		187	Dowel	045-187	153009
60	Cap Screw, 8-32 X 1/2	025-60	174123		188	Dowel Spring	045-188	199179
61	Circuit Breaker, ETA 1658	025-61	1103128P		189	Adjustment Dial	045-189	129467

044

	Description	Part Number	Item Number		Description	Part Number	Item Number
190	Cutter Guide Label	045-190	186066	N/S	Hex Key 5/32		129074
194	Chip Guard #10 Flat Washer	045-194	194272	N/S	Hex Key 1/8		129109
197	10-32 X 1/2 Button Head Screw	045-197	194038	N/S	12 Volt Motor		129297
N/S	Instruction Manual	044-IM	125384	N/S	040 Sargent Guide		BD0600XXXX
N/S	Hex Key 3/32		129014				

